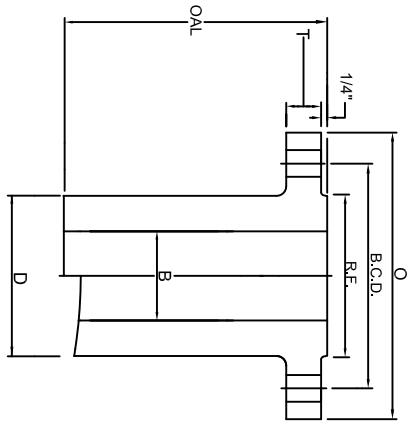
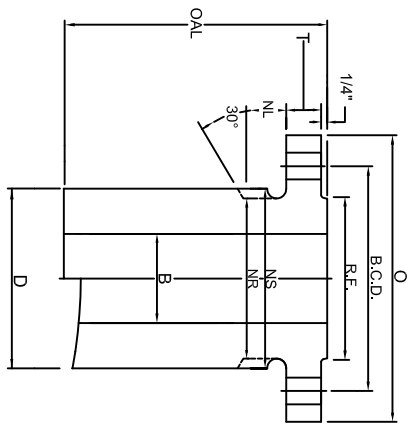


# CLASS 400 NOZZLE

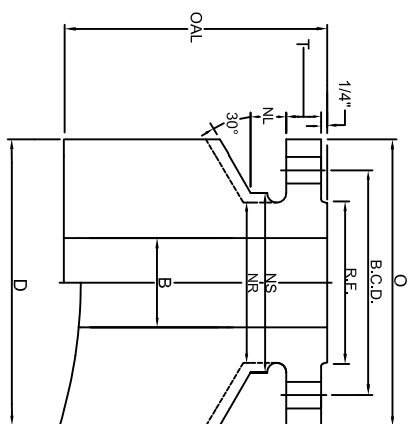
BARREL TYPES:  
LWN, HB, CO



LONG WELD NECK "LWN"



HEAVY BARREL "HB"



COMPLETE BARREL "CO"

SIZE	FLANGE			BOLTING			BORE		BARREL				LENGTH		WEIGHTS							
	NOM.	FLG O.D.	FLG THK	R.F.	O.D.	No. OF HOLES	HOLE SIZE	B.C.D.	LWN&CO	HB	NS	NR	NL	LWN	HB	CO	BASE	LWN	PER 1"	HB	PER 1"	CO
1/2	3.75	0.56	1.38	1.69	4	0.62	2.62	0.50	0.55	1.75	1.50	0.75	1.50	1.75	3.75	9	5	0.4	7	0.6	24	3.1
3/4	4.62	0.62	1.69	2.00	4	0.75	3.25	0.75	0.74	2.19	1.88	0.88	1.88	2.19	4.62	9	8	0.7	11	0.9	37	4.6
1	4.88	0.69	2.00	2.50	4	0.75	3.50	1.00	0.96	2.44	2.12	0.88	2.12	2.44	4.88	9	9	0.8	12	1.1	40	5.1
1 1/4	5.25	0.81	2.50	2.88	4	0.75	3.88	1.25	1.28	2.50	0.88	2.50	2.50	2.81	5.25	9	13	1	15	1.4	45	5.8
1 1/2	6.12	0.88	2.88	3.50	4	0.88	4.50	1.50	1.50	3.25	2.75	1.00	2.75	3.25	6.12	9	16	1.2	21	1.9	61	7.8
2	6.50	1.00	3.62	4.12	8	0.75	5.00	2.00	1.94	3.94	3.31	0.88	3.31	3.94	6.50	9	20	1.5	29	2.6	68	8.5
2 1/2	7.50	1.12	4.12	5.00	8	0.88	5.88	2.50	2.32	4.62	3.94	1.00	3.94	4.62	7.50	9	27	2.1	39	3.6	88	11
3	8.25	1.25	5.00	6.62	8	0.88	6.62	3.00	2.90	5.38	4.62	1.00	4.62	5.38	8.25	9	36	2.7	50	4.6	104	13
3 1/2	9.00	1.38	5.50	7.25	8	1.00	7.25	3.50	3.36	5.81	5.25	1.12	5.25	6.00	9.00	9	45	3.4	61	5.5	116	15
4	10.00	1.38	6.19	7.88	8	1.00	7.88	4.00	3.83	6.44	5.75	1.12	5.75	6.62	10.00	12	65	3.8	93	6.5	197	19
5	11.00	1.50	7.31	9.25	8	1.00	9.25	5.00	4.81	7.81	7.00	1.12	7.00	8.00	11.00	12	88	5.3	127	9.1	229	22
6	12.50	1.62	8.50	10.62	12	1.00	10.62	6.00	5.76	9.19	8.12	1.12	8.12	9.38	12.50	12	110	6.7	169	12	286	27
8	15.00	1.88	10.62	13.00	12	1.12	13.00	8.00	7.62	11.38	10.25	1.25	10.25	11.56	15.00	12	154	9.1	233	17	379	36
10	17.50	2.12	12.75	15.25	16	1.25	15.25	10.00	9.56	13.44	12.62	1.38	12.62	13.62	17.50	12	218	13	298	21	475	46
12	20.50	2.25	15.00	17.75	16	1.38	17.75	12.00	11.38	15.75	14.75	1.50	14.75	15.94	20.50	12	285	16	401	28	627	62
14	23.00	2.38	16.25	20.25	20	1.38	20.25	14.00	14.00	18.25	16.75	1.50	16.75	18.44	23.00	12	336	19	467	32	758	74
16	25.50	2.50	18.50	22.50	20	1.50	22.50	16.00	16.00	20.31	19.00	1.62	19.00	20.50	25.50	12	418	23	542	37	884	88
18	28.00	2.62	21.00	24.75	24	1.50	24.75	18.00	18.00	22.56	21.00	1.62	21.00	22.75	28.00	12	482	26	645	43	1033	102
20	30.50	2.75	23.00	27.00	24	1.62	27.00	20.00	20.00	24.63	23.12	1.75	23.12	25.00	30.50	12	568	30	759	50	1165	118
24	36.00	3.00	27.25	32.00	24	1.88	32.00	24.00	24.00	29.25	27.62	2.00	27.62	29.62	36.00	12	804	42	1040	67	1540	160

MATERIAL: Tri-Lad nozzles are manufactured from forgings in full accordance with ASME Section II. Tri-Lad can supply a variety of material grades, most commonly SA105, SA350 LF2, Alloy, Stainless, and other grades or exotics as needed.

BORE: Bore sizes listed above are standard. Tri-Lad will supply any bore size to meet your requirements upon request.

LENGTH: Over all lengths listed are standard to use for base weight calculations. Tri-Lad will manufacture the length of nozzle you require to suit your needs upon request.

TOLERANCING: Tri-Lad manufactures nozzles to ANSI B16.5 tolerances unless otherwise specified. Any standard or custom facing will be supplied upon request.

NUT STOP/RELIEF: Barrels on all Tri-Lad nozzles except regular long weld necks are manufactured with "Nut Stop"(NS) diameters unless the "Nut Relief"(NR) diameter is requested.

NOZZLE CONNECTIONS: Tri-Lad nozzle connections are supplied standard as square cut. Custom contouring or insert lip connections to fit any shell, head, or cone are available upon request.