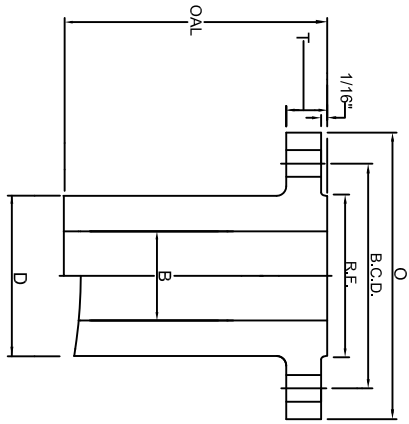
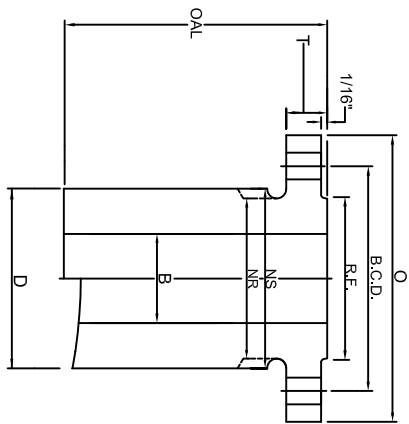


CLASS 150 NOZZLE

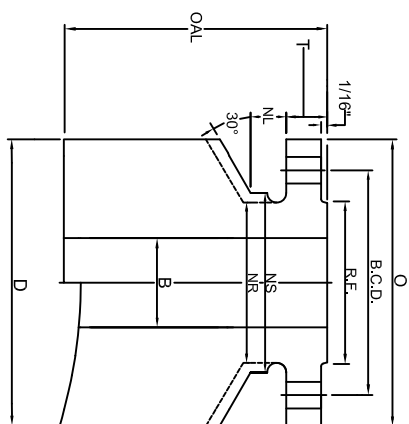
BARREL TYPES:
LWN, HB, CO



LONG WELD NECK "LWN"



HEAVY BARREL "HB"



COMPLETE BARREL "CO"

SIZE	FLANGE			BOLTING			BORE			BARREL			LENGTH		WEIGHTS					
	FLG O.D.	FLG THK	R.F. O.D.	No. OF HOLES	HOLE SIZE	B.C.D./B.C.D.	LWN&CO	HB	NS	STOP/RELIEF	LWN	HB	CO	BASE	LWN	HB	CO			
NPS SIZE	O	T	R.F.			B.C.D.	B	B	NR	NL	D	D	D	OAL	BASE PER 1"	BASE PER 1"	BASE PER 1"			
1/2	3.50	0.44	1.38	4	0.62	2.38	0.50	0.55	1.50	1.25	1.25	1.50	3.50	9	3	0.3	5	0.4	21	2.7
3/4	3.88	0.50	1.69	4	0.62	2.75	0.75	0.74	1.88	1.62	1.62	1.88	3.88	9	5	0.5	7	0.7	27	3.2
1	4.25	0.56	2.00	4	0.62	3.12	1.00	0.96	2.25	2.00	2.00	2.25	4.25	9	7	0.7	10	0.9	30	3.8
1 1/4	4.62	0.62	2.50	4	0.62	3.50	1.25	1.28	2.62	2.38	2.38	2.62	4.63	9	10	0.9	12	1.2	36	4.4
1 1/2	5.00	0.69	2.88	4	0.62	3.88	1.50	1.50	3.00	2.62	2.62	3.00	5.00	9	12	1	16	1.5	41	5.1
2	6.00	0.75	3.62	4	0.75	4.75	2.00	1.94	3.69	3.06	3.06	3.69	6.00	9	15	1.2	23	2.2	57	7.1
2 1/2	7.00	0.88	4.12	4	0.75	5.50	2.50	2.32	4.44	3.75	3.75	4.44	7.00	9	22	1.7	34	3.2	79	10
3	7.50	0.94	5.00	4	0.75	6.00	3.00	2.90	4.94	4.25	4.25	4.94	7.50	9	25	2	38	3.6	86	11
3 1/2	8.50	0.94	5.50	8	0.75	7.00	3.50	3.36	5.94	4.88	4.88	5.94	8.50	9	32	2.6	55	5.3	110	13
4	9.00	0.94	6.19	8	0.75	7.50	4.00	3.83	6.44	5.50	5.50	6.44	9.00	12	47	3.2	78	6	164	14
5	10.00	0.94	7.31	8	0.88	8.50	5.00	4.81	7.25	6.50	6.50	7.25	10.00	12	57	3.8	87	6.5	189	17
6	11.00	1.00	8.50	8	0.88	9.50	6.00	5.76	8.25	7.75	7.75	8.25	11.00	12	75	5.4	103	7.8	216	19
8	13.50	1.12	10.62	8	0.88	11.75	8.00	7.62	10.50	9.75	9.75	10.50	13.50	12	102	6.9	157	11	292	26
10	16.00	1.19	12.75	12	1.00	14.25	10.00	9.56	12.81	12.00	1.12	12.00	16.00	12	143	9.8	214	16	382	35
12	19.00	1.25	15.00	12	1.00	17.00	12.00	11.38	15.56	14.38	1.12	14.38	15.56	12	205	14	329	25	535	48
14	21.00	1.38	16.25	12	1.12	18.75	14.00	14.00	17.12	16.00	1.25	16.00	17.12	12	211	13	296	22	585	55
16	23.50	1.44	18.50	16	1.12	21.25	16.00	16.00	19.62	18.00	1.25	18.00	19.62	12	246	15	388	29	714	66
18	25.00	1.56	21.00	16	1.25	22.75	18.00	18.00	20.94	20.00	1.38	20.00	20.94	12	270	17	362	25	711	67
20	27.50	1.69	23.00	20	1.25	25.00	20.00	20.00	23.19	22.00	1.38	22.00	23.19	12	311	19	434	31	840	79
24	32.00	1.88	27.25	20	1.38	29.50	24.00	24.00	27.50	26.25	1.50	26.25	27.50	12	423	25	574	40	1046	100

MATERIAL: Tri-Lad nozzles are manufactured from forgings in full accordance with ASME Section II. Tri-Lad can supply a variety of material grades, most commonly SA105, SA350 LF2, Alloy, Stainless, and other grades or exotics as needed.

BORE: Bore sizes listed above are standard. Tri-Lad will supply any bore size to meet your requirements upon request.

LENGTH: Over all lengths listed are standard to use for base weight calculations. Tri-Lad will manufacture the length of nozzle you require to suit your needs upon request.

TOLERANCING: Tri-Lad manufactures nozzles to ANSI B16.5 tolerances unless otherwise specified. Any standard or custom facing will be supplied upon request.

NUT STOP/RELIEF: Barrels on all Tri-Lad nozzles except regular long weld necks are manufactured with "Nut Stop"(NS) diameters unless the "Nut Relief"(NR) diameter is requested.

NOZZLE CONNECTIONS: Tri-Lad nozzle connections are supplied standard as square cut. Custom contouring or insert lip connections to fit any shell, head, or cone are available upon request.