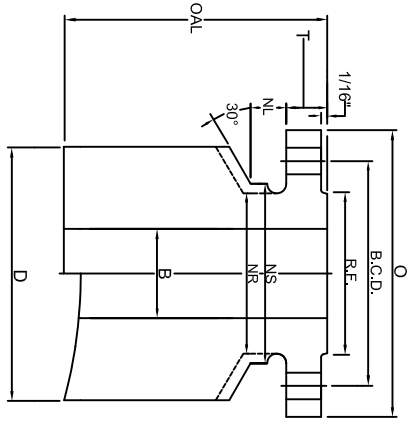
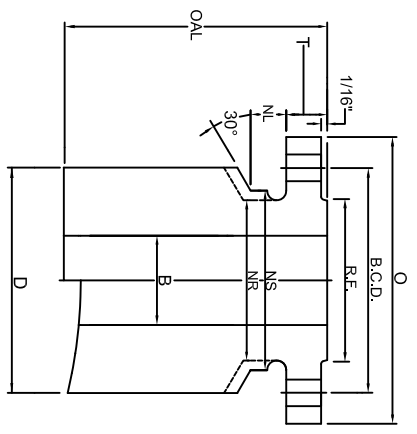
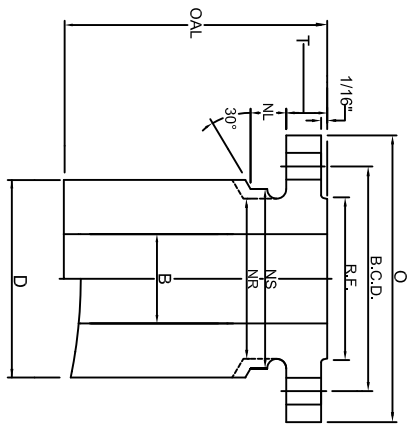


# CLASS 300 NOZZLE



## TRANSITIONAL CONNECTIONS: T1, T2, & T3

SIZE	FLANGE			BOLTING			BARREL						LENGTH		WEIGHTS						
	NOM. NPS SIZE	FLG O.D. Ø	FLG THK T	R.F. O.D. R.F.	No. OF HOLES	HOLE SIZE	B.C.D. B.C.D.	BORE B	STOP/RELIEF NS	RELIEF NR	RELIEF NL	T1 D	T2 D	T3 D	BASE OAL	T1 BASE	T1 PER 1"	T2 BASE	T2 PER 1"	T3 BASE	T3 PER 1"
1	4.88	0.69	2.00		4	0.75	3.50	0.96	2.44	2.12	0.88	2.75	3.75	4.00	12	20	1.5	34	2.9	39	3.4
1 1/2	6.12	0.81	2.88		4	0.88	4.50	1.50	3.25	2.75	1.00	4.00	4.62	5.50	12	39	3.1	51	4.3	70	6.2
2	6.50	0.88	3.62		8	0.75	5.00	1.94	3.94	3.31	0.88	4.62	5.50	6.00	12	49	3.9	69	5.9	81	7.2
2 1/2	7.50	1.00	4.12		8	0.88	5.88	2.32	4.62	3.94	1.00	5.75	6.00	6.38	12	72	6.2	80	6.8	90	7.8
3	8.25	1.12	5.00		8	0.88	6.62	2.90	5.38	4.62	1.00	6.00	6.38	7.00	12	78	6.1	88	7.2	106	9
3 1/2	9.00	1.19	5.50		8	0.88	7.25	3.36	6.00	5.25	1.00	7.00	7.75	8.25	12	104	8.4	127	11	144	13
4	10.00	1.25	6.19		8	0.88	7.88	3.83	6.62	5.75	1.00	7.00	7.75	8.88	12	102	7.6	125	10	164	14
5	11.00	1.38	7.31		8	0.88	9.25	4.81	8.00	7.00	1.00	8.25	8.88	9.88	12	133	10	155	12	194	17
6	12.50	1.44	8.50		12	0.88	10.62	5.76	9.38	8.12	1.00	9.88	10.38	11.00	12	185	14	206	17	233	20
8	15.00	1.62	10.62		12	1.00	13.00	7.62	11.56	10.25	1.12	12.12	13.50	14.25	12	255	20	324	28	364	32
10	17.50	1.88	12.75		16	1.12	15.25	9.56	13.62	12.62	1.25	14.25	15.12	16.25	16	425	25	498	31	591	38
12	20.50	2.00	15.00		16	1.25	17.75	11.38	15.94	14.75	1.38	16.25	17.38	18.25	16	532	30	636	38	720	45
14	23.00	2.12	16.25		20	1.25	20.25	14.00	18.44	16.75	1.38	19.38	20.12	22.25	16	681	40	761	47	966	67
16	25.50	2.25	18.50		20	1.38	22.50	16.00	20.50	19.00	1.50	22.25	23.25	24.12	16	877	53	988	63	1099	73
18	28.00	2.38	21.00		24	1.38	24.75	18.00	22.75	21.00	1.50	24.12	25.12	26.75	16	982	57	1102	68	1314	87
20	30.50	2.50	23.00		24	1.38	27.00	20.00	25.00	23.12	1.50	26.75	27.75	29.25	16	1176	70	1316	82	1525	101
24	36.00	2.75	27.25		24	1.62	32.00	24.00	29.62	27.62	1.75	30.75	32.00	33.62	16	1455	82	1647	100	1899	123

**MATERIAL:** Tri-Lad nozzles are manufactured from forgings in full accordance with ASME Section II. Tri-Lad can supply a variety of material grades, most commonly SA105, SA350 LF2, Alloy, Stainless, and other grades or exotics as needed.

**BORE:** Bore sizes listed above are standard. Tri-Lad will supply any bore size to meet your requirements upon request.

**LENGTH:** Over all lengths listed are standard to use for base weight calculations. Tri-Lad will manufacture the length of nozzle you require to suit your needs upon request.

**TOLERANCING:** Tri-Lad manufactures nozzles to ANSI B16.5 tolerances unless otherwise specified. Any standard or custom facing will be supplied upon request.

**NUT STOP/RELIEF:** Barrels on all Tri-Lad nozzles except regular long weld necks are manufactured with "Nut Stop"(NS) diameters unless the "Nut Relief"(NR) diameter is requested.

**NOZZLE CONNECTIONS:** Tri-Lad nozzle connections are supplied standard as square cut. Custom contouring or insert lip connections to fit any shell, head, or cone are available upon request.