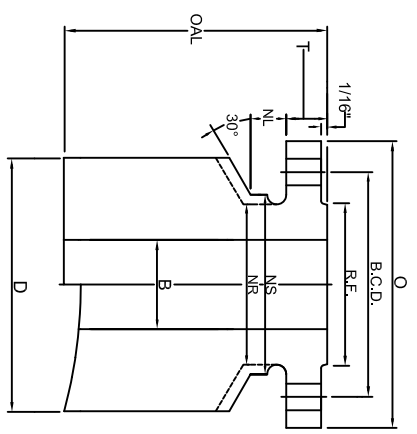
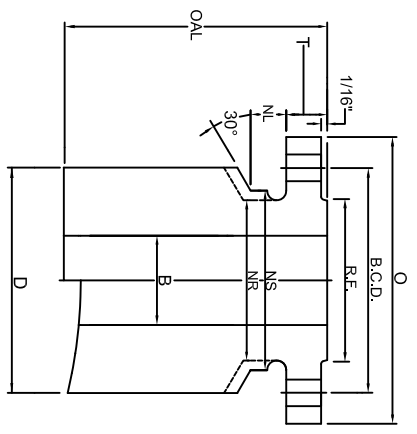
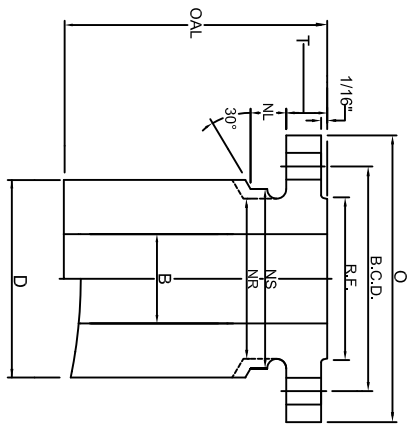


CLASS 150 NOZZLE



TRANSITIONAL CONNECTIONS:
T1, T2, & T3

SIZE	FLANGE			BOLTING			BARREL						LENGTH			WEIGHTS				
	NOML NPS SIZE	FLG O.D. O	FLG THK T	R.F. O.D. R.F.	No. OF HOLES	HOLE SIZE	B.C.DIA. B.C.D.	BORE B	NUT STOP/RELIEF NS	NR	NL	T1 D	T2 D	T3 D	BASE OAL	T1 BASE	PER 1"	T2 BASE	PER 1"	T3 BASE
1	4.25	0.56	2.00	4	0.62	3.12	0.96	2.25	2.00	0.75	2.75	3.25	4.00	12	19	1.5	26	2.2	38	3.4
1 1/2	5.00	0.69	2.88	4	0.62	3.88	1.50	3.00	2.62	0.75	3.25	4.00	4.62	12	25	1.9	37	3.1	49	4.3
2	6.00	0.75	3.62	4	0.75	4.75	1.94	3.69	3.06	0.88	4.00	4.62	5.50	12	35	2.7	48	3.9	67	5.9
2 1/2	7.00	0.88	4.12	4	0.75	5.50	2.32	4.44	3.75	0.88	4.62	5.75	6.00	12	48	3.5	73	6	81	7
3	7.50	0.94	5.00	4	0.75	6.00	2.90	4.94	4.25	0.88	5.75	6.00	6.38	12	69	5.5	75	6	85	7
3 1/2	8.50	0.94	5.50	8	0.75	7.00	3.36	5.94	4.88	0.88	6.38	7.00	7.75	12	83	7	102	8	126	11
4	9.00	0.94	6.19	8	0.75	7.50	3.83	6.44	5.50	0.88	7.00	7.75	8.25	12	95	8	119	10	137	12
5	10.00	0.94	7.31	8	0.88	8.50	4.81	7.25	6.50	1.00	7.75	8.25	8.88	12	104	8	121	10	144	12
6	11.00	1.00	8.50	8	0.88	9.50	5.76	8.25	7.75	1.00	8.88	9.88	10.38	12	126	10	167	14	188	17
8	13.50	1.12	10.62	8	0.88	11.75	7.62	10.50	9.75	1.00	11.00	11.50	12.12	12	180	14	205	17	236	20
10	16.00	1.19	12.75	12	1.00	14.25	9.56	12.81	12.00	1.12	13.50	14.25	15.12	16	337	20	399	25	474	31
12	19.00	1.25	15.00	12	1.00	17.00	11.38	15.56	14.38	1.12	16.25	17.38	18.25	16	494	30	606	38	696	45
14	21.00	1.38	16.25	12	1.12	18.75	14.00	17.12	16.00	1.25	18.25	19.38	20.12	16	501	31	622	40	705	47
16	23.50	1.44	18.50	16	1.12	21.25	16.00	19.62	18.00	1.25	20.12	21.00	22.25	16	562	33	666	41	820	53
18	25.00	1.56	21.00	16	1.25	22.75	18.00	20.94	20.00	1.38	22.25	23.25	24.12	16	624	38	751	48	864	57
20	27.50	1.69	23.00	20	1.25	25.00	20.00	23.19	22.00	1.38	24.12	25.00	26.25	16	684	41	804	50	978	64
24	32.00	1.88	27.25	20	1.38	29.50	24.00	27.50	26.25	1.50	27.75	29.25	30.75	16	772	43	1007	62	1246	82

MATERIAL: Tri-Lad nozzles are manufactured from forgings in full accordance with ASME Section II. Tri-Lad can supply a variety of material grades, most commonly SA105, SA350 LF2, Alloy, Stainless, and other grades or exotics as needed.

BORE: Bore sizes listed above are standard. Tri-Lad will supply any bore size to meet your requirements upon request.

LENGTH: Over all lengths listed are standard to use for base weight calculations. Tri-Lad will manufacture the length of nozzle you require to suit your needs upon request.

TOLERANCING: Tri-Lad manufactures nozzles to ANSI B16.5 tolerances unless otherwise specified. Any standard or custom facing will be supplied upon request.

NUT STOP/RELIEF: Barrels on all Tri-Lad nozzles except regular long weld necks are manufactured with "Nut Stop"(NS) diameters unless the "Nut Relief"(NR) diameter is requested.

NOZZLE CONNECTIONS: Tri-Lad nozzle connections are supplied standard as square cut. Custom contouring or insert lip connections to fit any shell, head, or cone are available upon request.