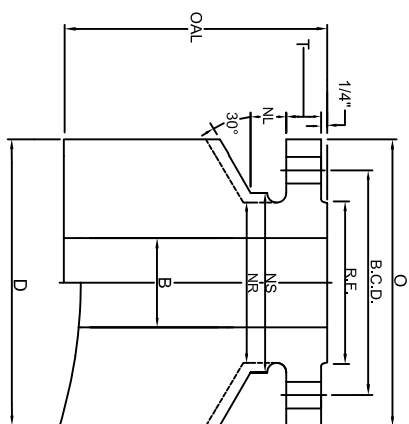
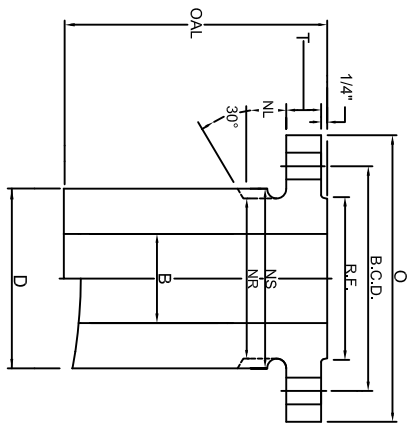
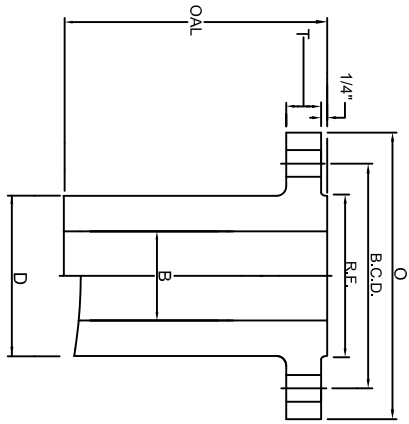


# CLASS 900 NOZZLE



BARREL TYPES:  
LWN, HB, CO

LONG WELD NECK "LWN"

HEAVY BARREL "HB"

COMPLETE BARREL "CO"

SIZE	FLANGE			BOLTING			BORE			BARREL					LENGTH	WEIGHTS					
	FLG O.D.	FLG THK	R.F. O.D.	No. OF HOLES	HOLE SIZE	B.C.D. B.C.D.	LWN&CO	HB	NS	NR	NL	LWN	HB	CO		BASE	LWN	PER 1"	HB	PER 1"	CO
1/2	4.75	0.88	1.38	4	0.88	3.25	0.50	0.55	2.00	1.56	1.00	1.56	2.00	4.75	9	8	0.5	10	0.8	37	5
3/4	5.12	1.00	1.69	4	0.88	3.50	0.75	0.74	2.25	1.81	1.00	1.81	2.25	5.12	9	10	0.6	13	1	42	5.7
1	5.88	1.12	2.00	4	1.00	4.00	1.00	0.96	2.56	2.12	1.12	2.12	2.56	5.88	9	13	0.8	17	1.3	54	7.5
1 1/4	6.25	1.12	2.50	4	1.00	4.38	1.25	1.28	2.94	2.50	1.12	2.50	2.94	6.25	9	17	1	20	1.6	61	8.3
1 1/2	7.00	1.25	2.88	4	1.12	4.88	1.50	1.50	3.25	2.75	1.25	2.75	3.25	7.00	9	21	1.2	26	1.9	77	10
2	8.50	1.50	3.62	8	1.00	6.50	2.00	1.94	5.06	4.12	1.12	4.12	5.06	8.50	9	42	2.9	56	4.9	115	15
2 1/2	9.62	1.62	4.12	8	1.12	7.50	2.50	2.32	5.88	4.88	1.25	4.88	5.88	9.62	9	56	3.9	75	6.5	144	19
3	9.50	1.50	5.00	8	1.00	7.50	3.00	2.90	6.06	5.00	1.12	5.00	6.06	9.50	9	51	3.6	71	6.3	139	18
4	11.50	1.75	6.19	8	1.25	9.25	4.00	3.83	7.44	6.25	1.38	6.25	7.44	11.50	12	93	5.1	133	9.1	270	26
5	13.75	2.00	7.31	8	1.38	11.00	5.00	4.81	9.00	7.50	1.50	7.50	9.00	13.75	12	135	7	194	13	376	37
6	15.00	2.19	8.50	12	1.25	12.50	6.00	5.76	10.69	9.25	1.38	9.25	10.69	15.00	12	191	11	259	18	436	42
8	18.50	2.50	10.62	12	1.50	15.50	8.00	7.63	13.31	11.75	1.62	11.75	13.31	18.50	12	297	16	389	27	626	62
10	21.50	2.75	12.75	16	1.50	18.50	10.00	9.56	16.31	14.50	1.62	14.50	16.31	21.50	12	422	25	558	39	824	81
12	24.00	3.12	15.00	20	1.50	21.00	12.00	11.38	18.81	16.50	1.62	16.50	18.81	24.00	12	518	29	715	50	984	96
14	27.25	3.38	16.25	20	1.62	22.00	14.00	14.00	19.62	17.75	1.75	17.75	19.62	25.25	16	624	26	817	42	1368	98
16	27.75	3.50	18.50	20	1.75	24.25	16.00	16.00	21.69	20.00	1.88	20.00	21.69	27.75	16	750	32	942	48	1573	114
18	31.00	4.00	21.00	20	2.00	27.00	18.00	18.00	24.06	22.25	2.12	22.25	24.06	31.00	16	950	38	1169	57	1898	142
20	33.75	4.25	23.00	20	2.12	29.50	20.00	20.00	26.38	24.50	2.25	24.50	26.38	33.75	16	1121	43	1378	66	2182	164
24	41.00	5.50	27.25	20	2.62	35.50	24.00	24.00	31.62	29.50	2.75	29.50	31.62	41.00	16	1865	65	2160	94	3084	246

MATERIAL: Tri-Lad nozzles are manufactured from forgings in full accordance with ASME Section II. Tri-Lad can supply a variety of material grades, mostly SA1105, SA350 LF2, Alloy, Stainless, and other grades or exotics as needed.

BORE: Bore sizes listed above are standard. Tri-Lad will supply any bore size to meet your requirements upon request.

LENGTH: Over all lengths listed are standard to use for base weight calculations. Tri-Lad will manufacture the length of nozzle you require to suit your needs upon request.

TOLERANCING: Tri-Lad manufactures nozzles to ANSI B16.5 unless otherwise specified. Any standard or custom facing will be supplied upon request.

NUT STOP/RELIEF: Barrels on all Tri-Lad nozzles except regular long weld necks are manufactured with "Nut Stop"(NS) diameters unless the "Nut Relief"(NR) diameter is requested.

NOZZLE CONNECTIONS: Tri-Lad nozzle connections are supplied standard as square cut. Custom contouring or insert lip connections to fit any shell, head, or cone are available upon request.