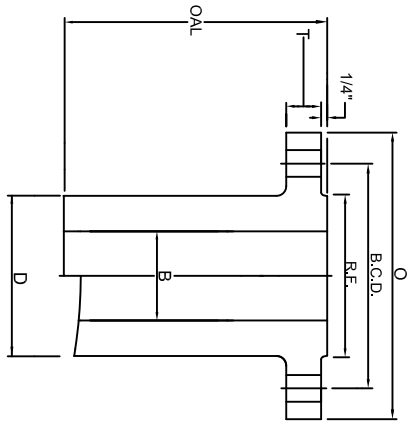
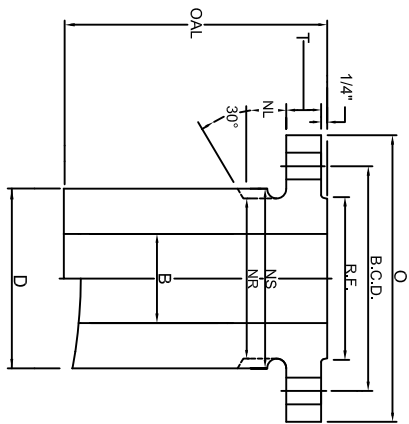


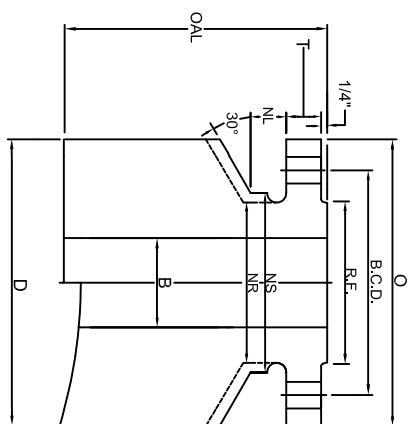
CLASS 2500 NOZZLE



LONG WELD NECK "LWN"



HEAVY BARREL "HB"



COMPLETE BARREL "CO"

BARREL TYPES:
LWN, HB, CO

SIZE	FLANGE			BOLTING			BORE		BARREL			LENGTH		WEIGHTS							
	NOM. NPS SIZE	FLG O.D.	FLG THK	R.F. O.D.	No. OF HOLES	HOLE SIZE	B.C.D.	LWN&CO	HB	STOP/RELIEF	LWN	HB	CO	BASE OAL	LWN	HB	CO				
	O	I	R.F.				B	B	NS	NR	NL	D	D	D	BASE	PER 1"	BASE	PER 1"	BASE	PER 1"	
1/2	5.25	1.19	1.38	4	0.88	3.50	0.50	0.55	2.25	1.81	1.00	1.81	2.25	5.25	9	11	0.7	14	1.1	45	6.1
3/4	5.50	1.25	1.69	4	0.88	3.75	0.75	0.74	2.50	2.06	1.00	2.06	2.50	5.50	9	13	0.8	17	1.3	49	6.6
1	6.25	1.38	2.00	4	1.00	4.25	1.00	0.96	2.81	2.25	1.12	2.25	2.81	6.25	9	18	0.9	22	1.6	62	8.5
1 1/4	7.25	1.50	2.50	4	1.12	5.12	1.25	1.28	3.50	2.88	1.25	2.88	3.50	7.25	9	27	1.5	32	2.4	84	11
1 1/2	8.00	1.75	2.88	4	1.25	5.75	1.50	1.50	3.94	3.12	1.38	3.12	3.94	8.00	9	33	1.7	42	3	94	14
2	9.25	2.00	3.62	8	1.12	6.75	2.00	1.94	5.12	3.75	1.25	3.75	5.12	9.25	9	48	2.2	66	5	131	18
2 1/2	10.50	2.25	4.12	8	1.25	7.75	2.50	2.32	5.94	4.50	1.38	4.50	5.94	10.50	9	66	3.1	90	6.7	165	23
3	12.00	2.62	5.00	8	1.38	9.00	3.00	2.90	7.00	5.25	1.50	5.25	7.00	12.00	9	97	4.1	127	9	210	30
4	14.00	3.00	6.19	8	1.62	10.75	4.00	3.83	8.38	6.50	1.75	6.50	8.38	14.00	12	159	5.8	178	12	291	40
5	16.50	3.62	7.31	8	1.88	12.75	5.00	4.81	10.00	8.00	2.00	8.00	10.00	16.50	12	248	8.7	218	17	391	55
6	19.00	4.25	8.50	8	2.12	14.50	6.00	5.76	11.38	9.25	2.25	9.25	11.38	19.00	12	358	11	241	21	518	73
8	21.75	5.00	10.62	12	2.12	17.25	8.00	7.63	14.12	12.00	2.25	12.00	14.12	21.75	16	589	18	273	31	743	92
10	26.50	6.50	12.75	12	2.62	21.25	10.00	9.56	17.38	14.75	2.75	14.75	17.38	26.50	16	997	26	320	47	1167	134
12	30.00	7.25	15.00	12	2.88	24.38	12.00	11.38	20.12	17.38	3.00	17.38	20.12	30.00	16	1363	35	369	61	1609	168

MATERIAL: Tri-Lad nozzles are manufactured from forgings in full accordance with ASME Section II. Tri-Lad can supply a variety of material grades, mostly SA105, SA350 LF2, Alloy, Stainless, and other grades or exotics as needed.

BORE: Bore sizes listed above are standard. Tri-Lad will supply any bore size to meet your requirements upon request.

LENGTH: Over all lengths listed are standard to use for base weight calculations. Tri-Lad will manufacture the length of nozzle you require to suit your needs upon request.

TOLERANCING: Tri-Lad manufactures nozzles to ANSI B16.5 tolerances unless otherwise specified. Any standard or custom facing will be supplied upon request.

NUIT STOP/RELIEF: Barrels on all Tri-Lad nozzles except regular long weld necks are manufactured with "Nut Stop"(NS) diameters unless the "Nut Relief"(NR) diameter is requested.

NOZZLE CONNECTIONS: Tri-Lad nozzle connections are supplied standard as square cut. Custom contouring or insert lip connections to fit any shell, head, or cone are available upon request.